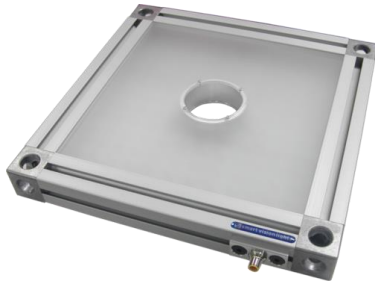



**product features**


- 128, 1mm<sup>2</sup> Die High Current LEDs
- Different Lenses Available
- 45mm Industrial Frame
- T-Slot for mounting
- Conversion adapters for different cameras
- PNP and NPN Strobe input
- Continuous operation or Strobe mode
- Analog intensity 0-10VDC signal


**product specifications**

<b>Electrical Input</b>	24 VDC +/- 5%
<b>Current</b>	Max. 2A
<b>Wattage</b>	Max. 48W
<b>Strobe Input</b>	PNP ► +4VDC or greater to activate.   NPN ► GND (<1VDC) to activate
<b>PNP Line</b>	3.7mA @ 3VDC   6.2mA @ 5VDC   12.6mA @ 10VDC   30.4mA @ 24 VDC
<b>NPN Line</b>	22mA @ Common (0VDC)
<b>Continuous Mode</b>	Light will be in continuous mode by leaving signal on strobe input active
<b>Analog Intensity</b>	The output is adjustable from 10 -100% of brightness by a 0 -10 VDC signal
<b>Connection</b>	5 pin M12 connector
<b>Lifespan</b>	100,000 hrs
<b>IP Rating</b>	IP50
<b>Certification</b>	CE and RoHS certified
<b>IEC 62471 Rating</b>	See page 3


**product number key**

## RL300 – XXX – X\* —» Part Number Key

**Product Family:**  
Ring Light  
RL300

**Color:**  
470, 505, 530, 625,  
850 & WHI (White)

**Lenses:**  
N - Narrow

\* Lights come standard with Wide lenses

CE and RoHS Compliant



## warnings

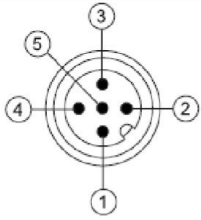


### Attention

Please note that the power requirements are up to 2A at 24VDC. Failure to supply light with up to 2A can result in non-repeatable lighting. Contact Smart Vision Lights for more information.



## wiring configuration

	Pin	Function	Signal	Wire Color
1	1	Power In	+24VDC	BROWN
2	2	NPN	Sinking Signal	WHITE
3	3	GND	Ground	BLUE
4	4	PNP	Sourcing Signal	BLACK
5	5	Intensity Control	0-10VDC	GREY †

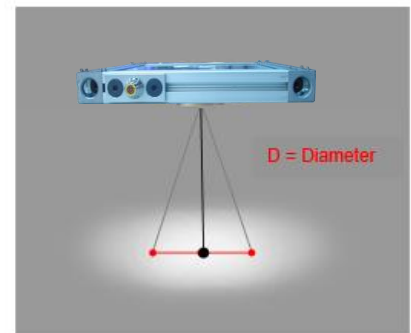
† Some cables use green with yellow stripe for 0-10V adjustment



## optical performance

### RL300-XXX

Working Distance mm (inches)	Pattern (80%-100% measured intensity) mm (Inches)
.5m (20")	23cm(9") D
1m (40")	37cm(14.5") D
Typical output performance	
Distance = .5 meter	Illumination (Lux) 25000
<i>Illumination measurement taken on White Lights – 6500K</i>	



## mounting & accessories



- Standard T-nut with 5/16-18x1/2" bolt



risk group

According to IEC 62471:2006. Full documentation upon request.

**Notice**

Exempt Group: No photobiological hazard to eyes or skin even for continuous, unrestricted use.  
Applicable for wavelengths: 625 and 850.

**Caution**

Risk Group 1: Possibly hazardous optical radiation emitted from this product. Do not stare at operating lamp. May be harmful to eye. Safe for most applications except prolonged exposures.  
Applicable for wavelengths: 470, 505, 530, and WHI.